

Your welcome to TC Latlumkhaew model

PPT.PRESENTATION TO DELEGATS AND REPRESENTATIVES OF
THE ELEVENTH UNITED NATION CONGRESS ON CRIME PREVENTION
AND CRIMINAL JUSTICE ON APRIL 21 -22, 2005



Prepared By
Somchart Eiamanupong
Expert on Rehabilitation and Community Affairs
Probation Department, Ministry of Justice.

Welcome to
Drug Addicts Rehabilitation Center
Lodlumkoew, Pathumthani
April 21-22, 2005





DRUG SITUATION

H.E. Pol. Lt. Col. Thaksin Shinawatra, the Prime Minister looked at sacks containing 9,430,000 tablets of methamphetamine seized by Thai law enforcement agencies with good cooperation from local people in Mae Sot District of Tak Province, a border province close to Myanmar, on October 10, 2003.



The overall goals of the Government of the demand reduction to be achieved are:

1. No new drug user.
2. All existing drug users are under a proper treatment, rehabilitation, or continuing care programme.
3. Communities are empowered to protect themselves against drugs.

Treatment Approaches of Thailand

1. Voluntary System;

2. Correctional System;

The reason of compulsory treatment ?

- ❑ the critical destruction of drug epidemic, especially, methamphetamine or "YA BA";
- ❑ drug abuses ,for the voluntary system, have not any motivational reinforcement to change, and drop out rates of the voluntary system is so high, and also highly violation of treatment conditions;
- ❑ the correctional system is so crowded than its capacity, that cause the system is not appropriate environment for effective drug treatment.

Compulsory Treatment

- Residential program;
- “Return a good citizen to the society.”
- The first diversion program of criminal justice system for drug abuses;
- Arrested of drug abuses are patients who should receive treatment than incarceration;
- Multi Agencies Drug Rehabilitation Enforcement Approach Model or “MADREAM” MODEL;

Drug Addict Rehabilitation 2002

And The 9 of The laws (Pp. 9)

- DARA Act 2002;

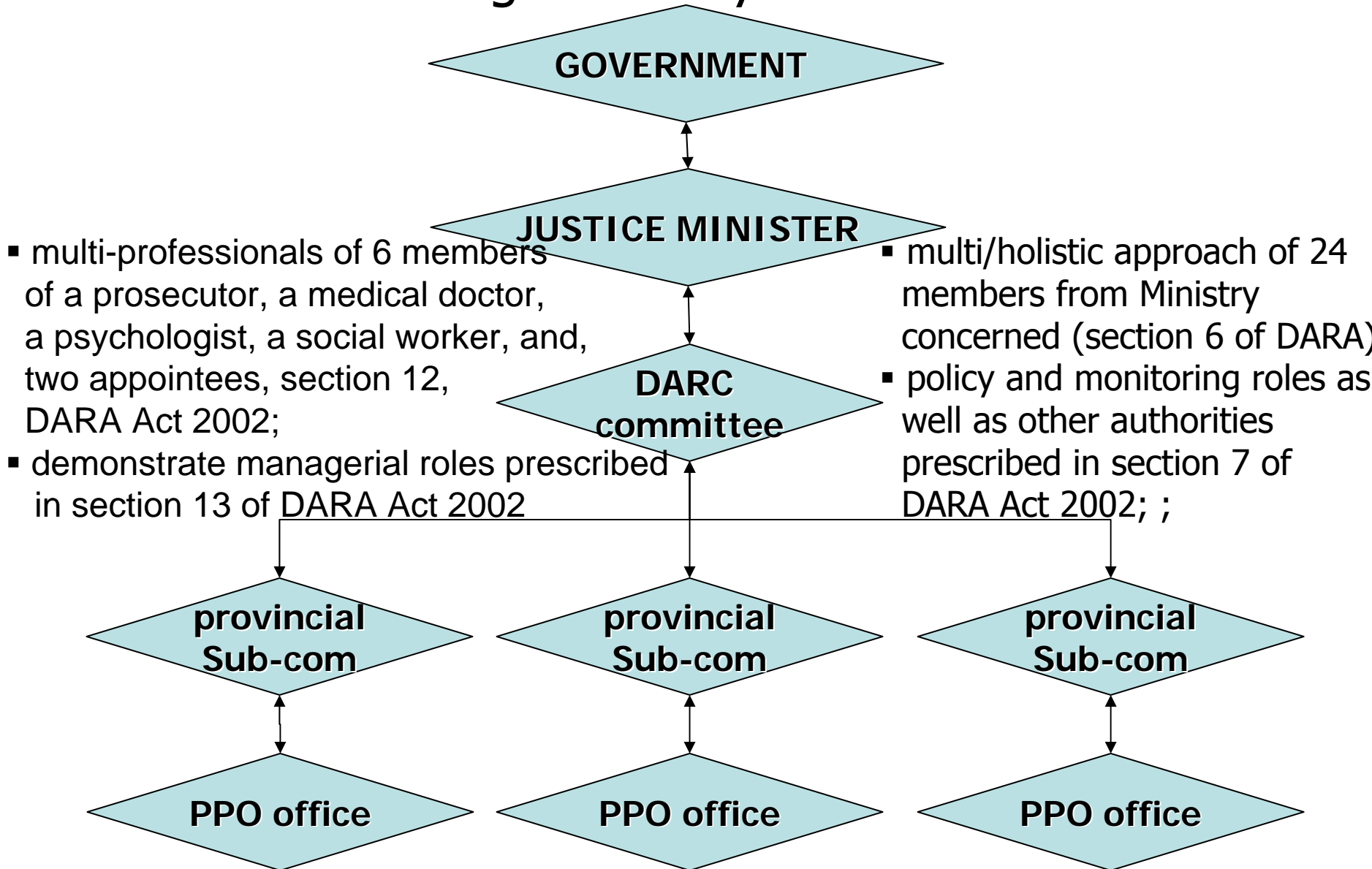
JM Rules of :

- the N/T/C/Q Req. 2003;
- the ex-Oficio SC Mem. Qualifications 2003;
- the Non-Official SC Mem. Compensation 2003;
- the Procedure and judgment of Appeal 2003;

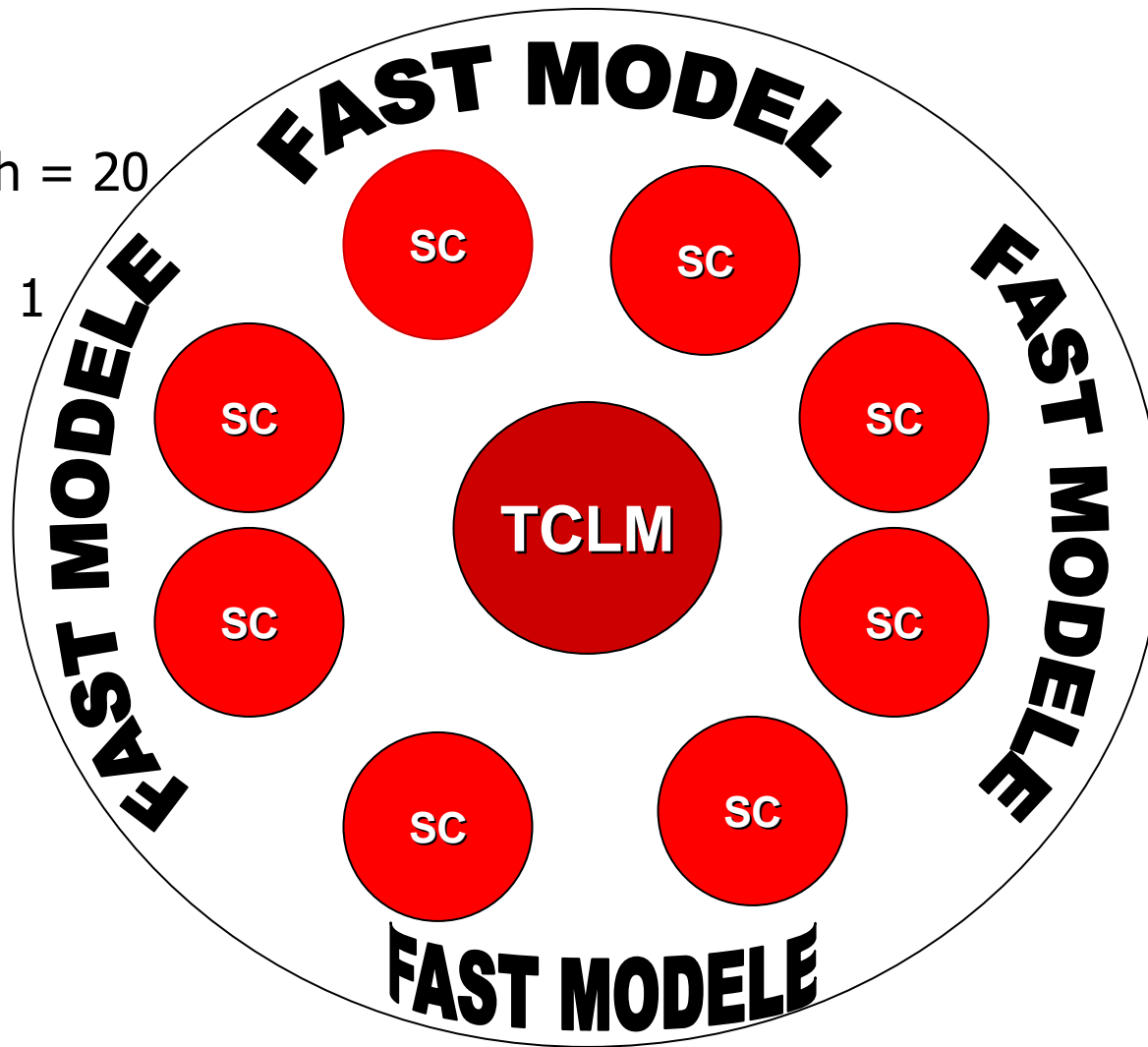
DARC Regulations of:

- the A/CC Permitting/Card Characteristics of Competent Official 2003;
- the Case Fineable Infliction 2003;
- JM Notification of the Locality of DAR Center according to DARA Act 2003.

Managerial Body Structure.



- Air force = 11
- Army = 7
- Navy = 3
- Interior = 4
- Public health = 20
- BMA = 1
- Probation = 1



Multi Agency Drug Rehabilitation
Enforcement Approach Module (MADREAM)

MADREAM

The camps may take 120 days of *FASTmodel* depending on the seriousness of the problems, then follow with Re-entry preparedness of 60 days. Military-style campuses are still very popular.

- F = Family
- A = Alternative Activities
- S = Self Esteem
- T = Therapeutic

The TCLM of the Center launched drug addict rehabilitation program in 2003; one year after the DARA Act 2002 was enacted. TCLM centre is available both male and female , adults and juveniles. The capacity of 100 beds for each gender, the full capacity for both genders not more than 200.



Director

Secretaries
and
office support
staff(11)

Assessment
and
Identification
staff(4)

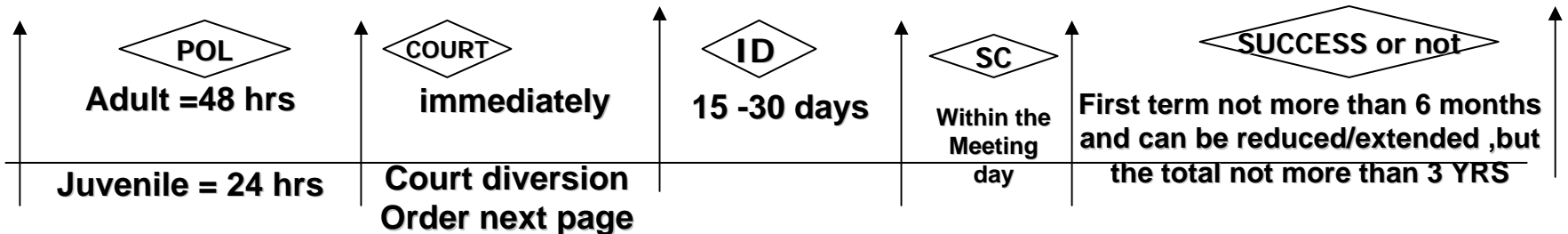
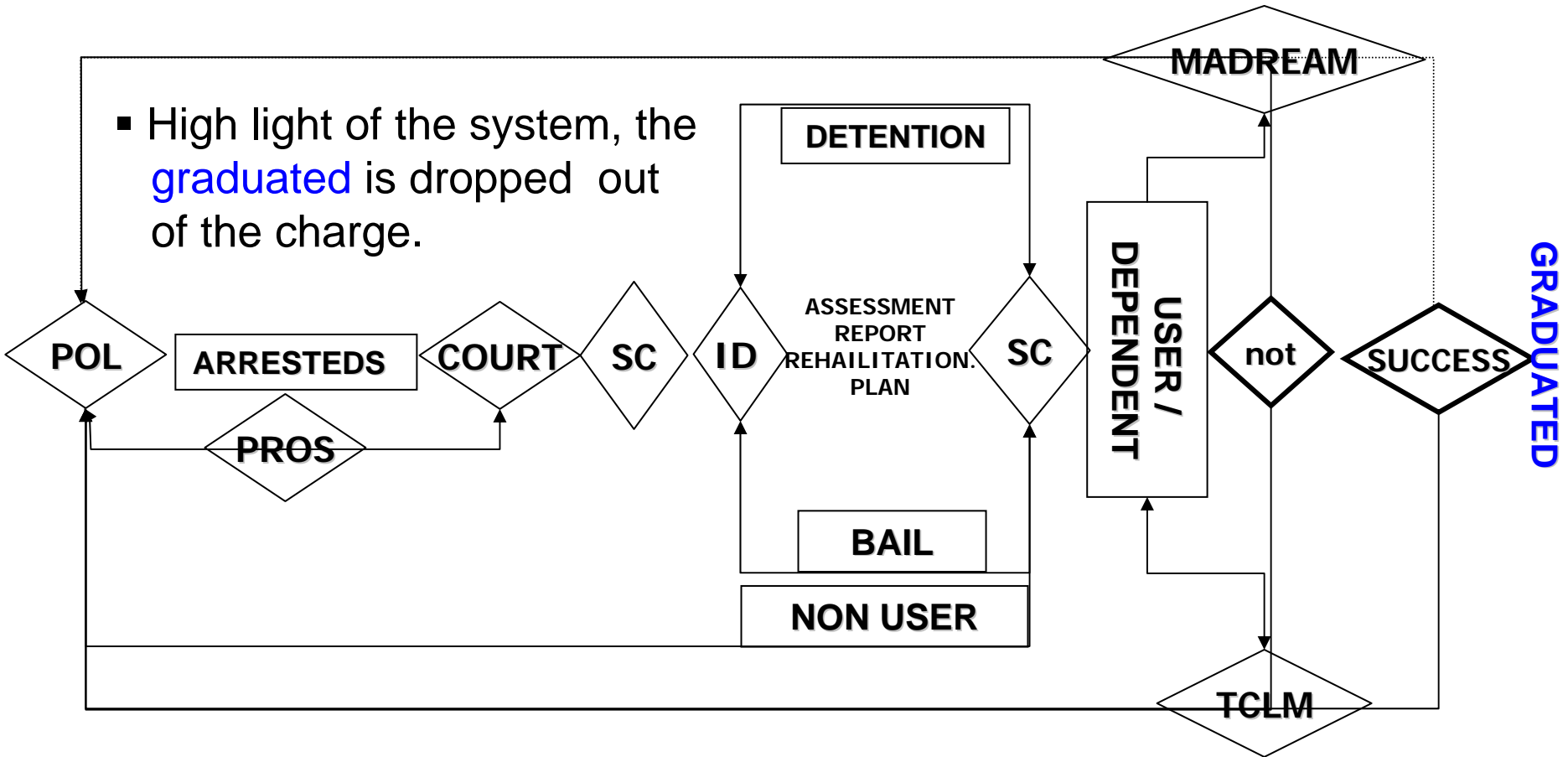
Pro –
staff
13

Drug/
care
workers
23



DIVERSION THROUGH COMPULSORY SYSTEM

- High light of the system, the **graduated** is dropped out of the charge.





The Arresteds are :

- The alleged of being an offence of :-
 - users,
 - users and possessing illicit drugs,
 - users and possessing illicit drugs with the disposal intention or,
 - users and disposal the illicit drugs;
- The illicit drug is consistent with the C/T/C/Q of the drugs prescribed in Justice Ministerial Rules;[\[1\]](#)
- The alleged does not appear to be the offender or to be prosecuted for other offences which punishable with imprisonment or to be imprisoned by judgment of court.

[1] The JM Rule of the Nature, according to section 7 of NARCOTICS ACT 1979, type, Category, and Quantity of Drugs Requirements 2003 are:

Drug category one

1. Heroin pure weights not more than 100 milligrams;
2. Methamphetamine not more than useable 5 units or total weights not more than 500 milligrams;
3. Amphetamine not more than useable 5 units or total weights not more than 500 milligrams;
4. 3,4-methylenedioxyamphetamine (MDA) ,often called ecstasy, not more than useable 5 units or total weights not more than 1,200 milligrams;
5. Methylene dioxy methamphetamine (MDMA) not more than useable 5 units or total weights not more than 1,200 milligrams;
6. N-methyl-D-aspartate (NMDA Or MDE) not more than useable 5 units or total weights not more than 1,250 milligrams;

Drug category two

1. Cocaine pure weights not more than 200 milligrams;
2. Opiate pure weights not more than 5,000 milligrams;

Drug category five

1. Marihuana pure weights not more than 5,000 milligrams.



**COURT DIVERSION
ORDER**

The court consideration shall take into account of the age, gender, and the specific personal characters, Whether the Arresteds are eligible according to the DARA 2002 section 19, and shall inform the sub-committee to acknowledge.

TCLM

consists of 4 elements (pp.13)

- Philosophy, ideal, and rules of the house;
- Hierarchical social structure;
- Tools of the house; and
- Re-entry preparing management.

TCLM'S philosophy

- LOVE AND CONCERN
- cooperation;
- safety;
- honesty;
- responsibility.

TCLM Rules are:

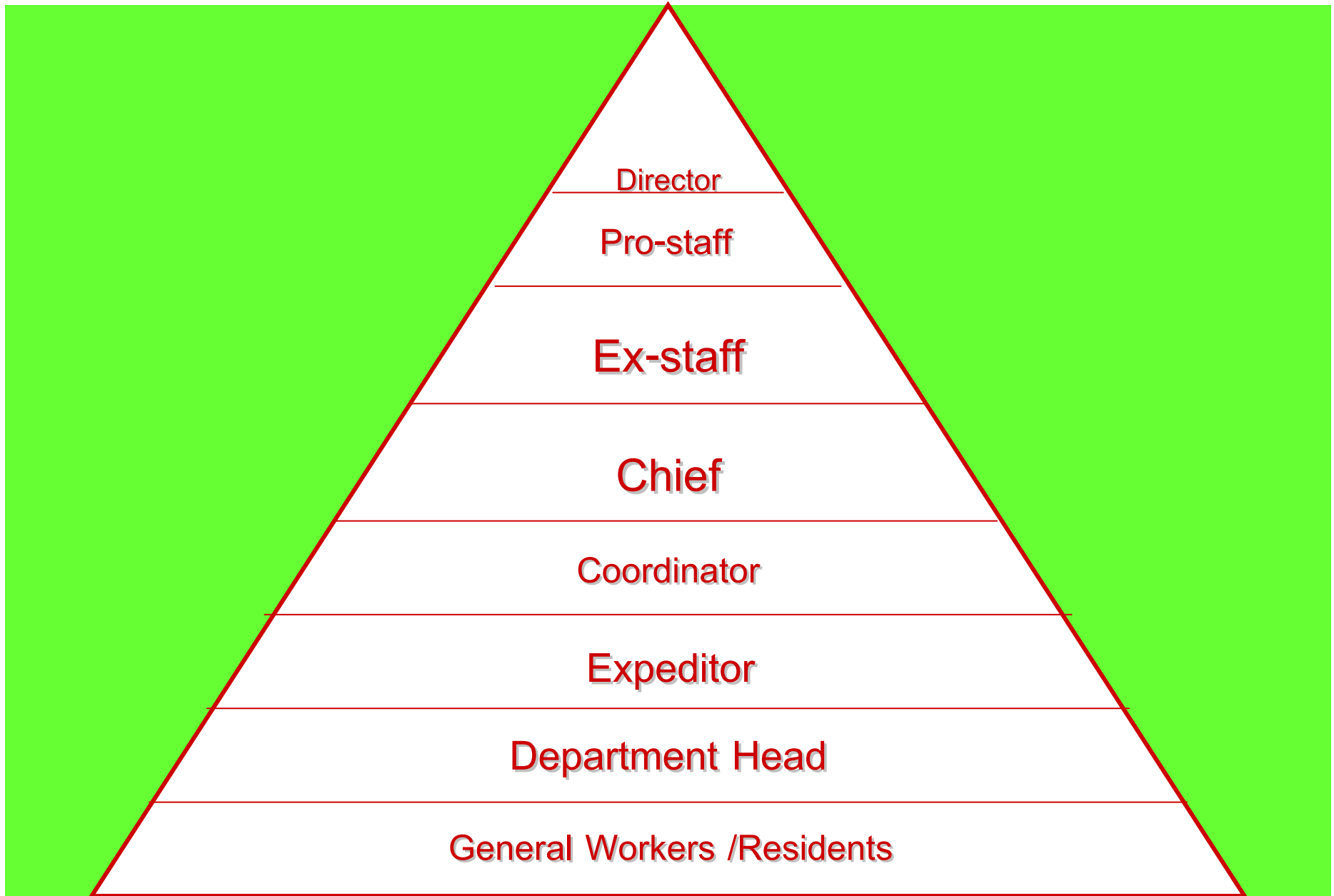
- No drugs or drug paraphernalia, no alcohol or alcohol paraphernalia;
- No sex;
- No Quarrels or Fighting,

VIOLATION OF THE RULES WILL FOLLOW WITH APPROPRIATE CONSEQUENCES PRESCRIBED by connected law

2009 10 14

TCLM 3 PHASES

- Phase one: induction stage (ended within 1 month), Cold Turkish, not medical, used for handling withdrawal symptom;
- Phase two (ended between 2-5 month depends upon the consistent behavioral change mandated in his/her rehabilitation plan approved by the sub-committee, and, on the same above common reasons, the duration can be extended or reduced by the Sub Committee)
- Phase three: Re-entry preparation (ended within 1-2 months)



Hierarchical Social Structure of TCLM:

Tools of the house

A. Group programs:

- Group programs for new arrivals
 1. Orientation programs;
 2. Newcomers group programs;
 3. Motivation group programs;
 4. Initial interview group programs



■ Group programs for all residents

5. Morning meeting group programs;
6. Encounter group programs;
7. Confrontation group programs;
8. Seminar group programs;
9. Spiritual group programs;
10. Early recovery group programs;
11. Family education group programs;
12. Weekend wrap-up group programs;



(Group programs for all residents (cont.))

13. Working team meeting group programs;
14. Staff meeting group programs;
15. Group counseling or static group programs;
16. Hygiene and health education group programs;
- 17 . Exercise group programs



- Group therapy for specified addicts:
 1. Family group counseling programs;
 2. Marathon group meeting programs;

B. Working team approach for residents

1. Team work centered approach programs;
2. Vocational programs;
3. Clubs or association involvement programs;

C. Supporting services programs;

D. Privilege and seniority enhancement programs.



Residents by age and gender 2003-2005

age	2003		2004		2005	
	male	female	male	female	male	female
20 or less	32	24	36	30	8	7
21-25	49	38	68	37	21	8
26-30	43	26	23	33	12	4
31-35	38	11	16	11	10	2
36-40	18	6	13	9	1	-
41-45	7	1	2	7	1	2
46 or more	6	5	3	1	-	1
Total by gender	193	111	161	128	53	24
Total	304		289		77	

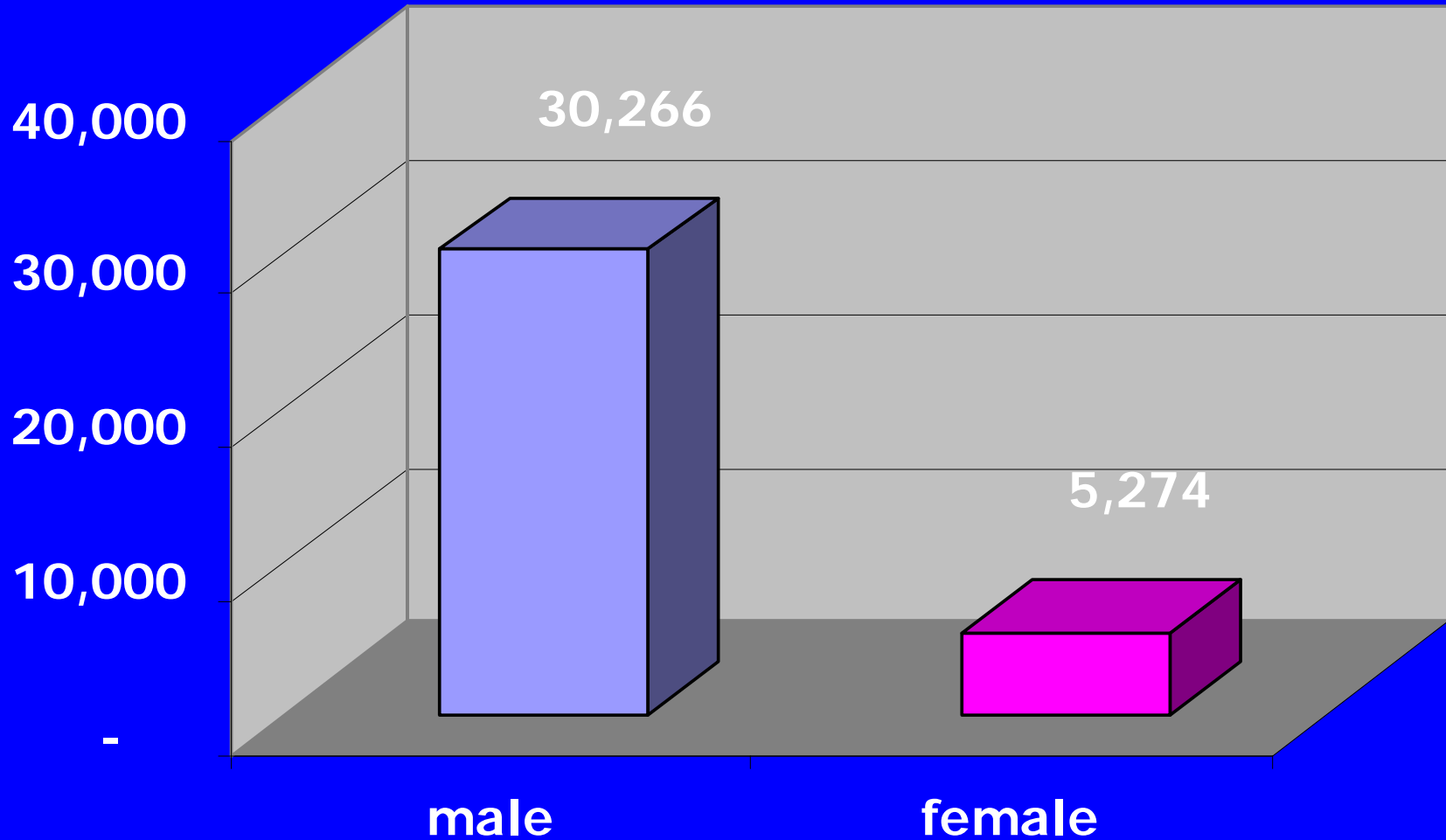
From the table, we will see that from 2003 the total number of residents of TCLM

has gradually declined, and at nowadays, half year of 2005, the number of residents

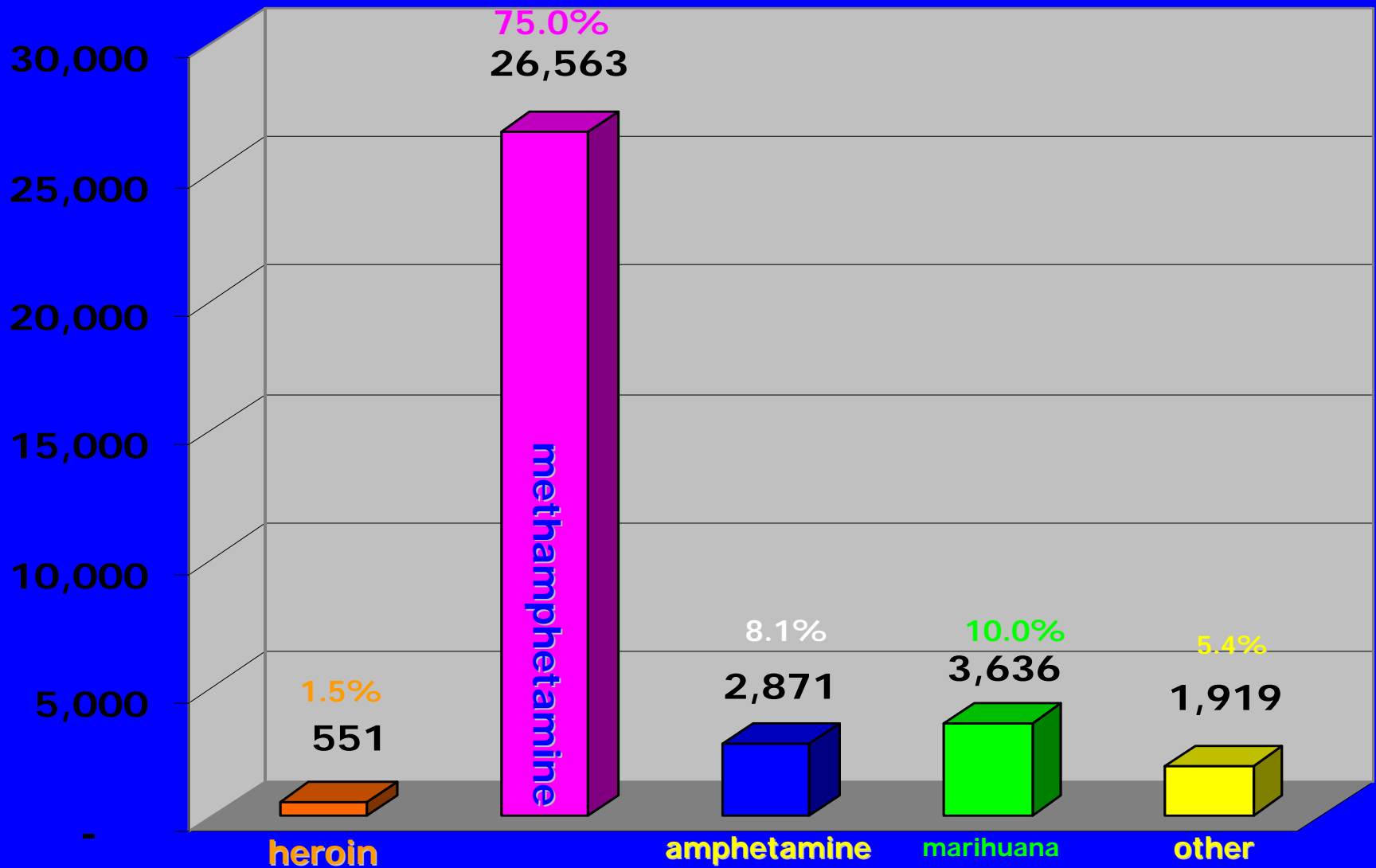


H.E. Pol. Lt. Col. Thaksin Shinawatra, the Prime Minister made the Declaration of Victory Over Drugs before tens of thousands of people gathering at the Royal Plaza on December 3, 2003. The victory resulted from the “War on Drugs” since February 1, 2003. It was also meant especially to mark His Majesty the 76th King’s birthday on December 5, 2003.

the number of the assessed and identified
by gender = 35,540 ,Mar3,2003 - Dec31,2004.

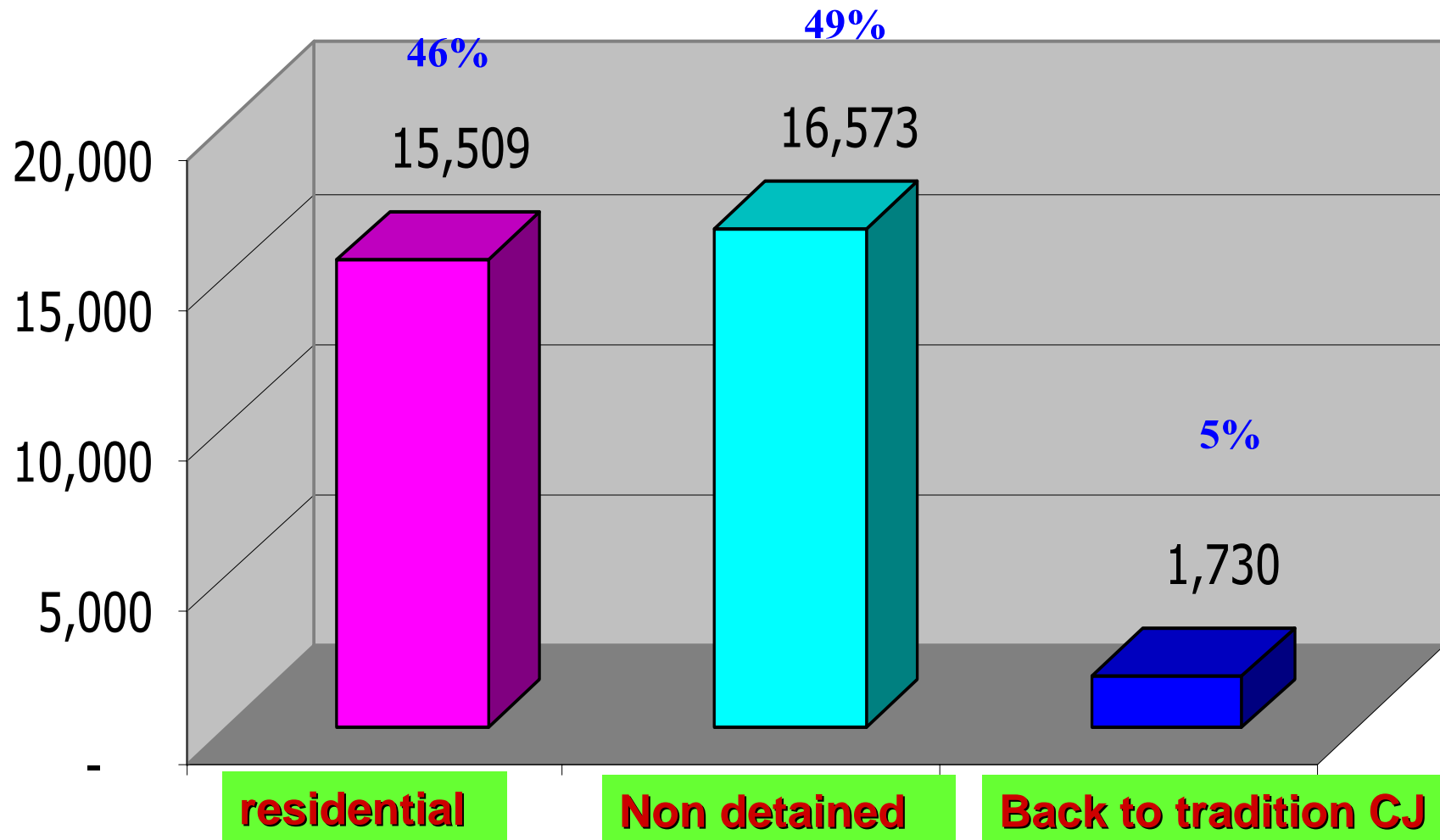


**the number of the assessed and identified
by types of drugs used ,Mar 3,2003 - Dec 31 2004
total =35,540**

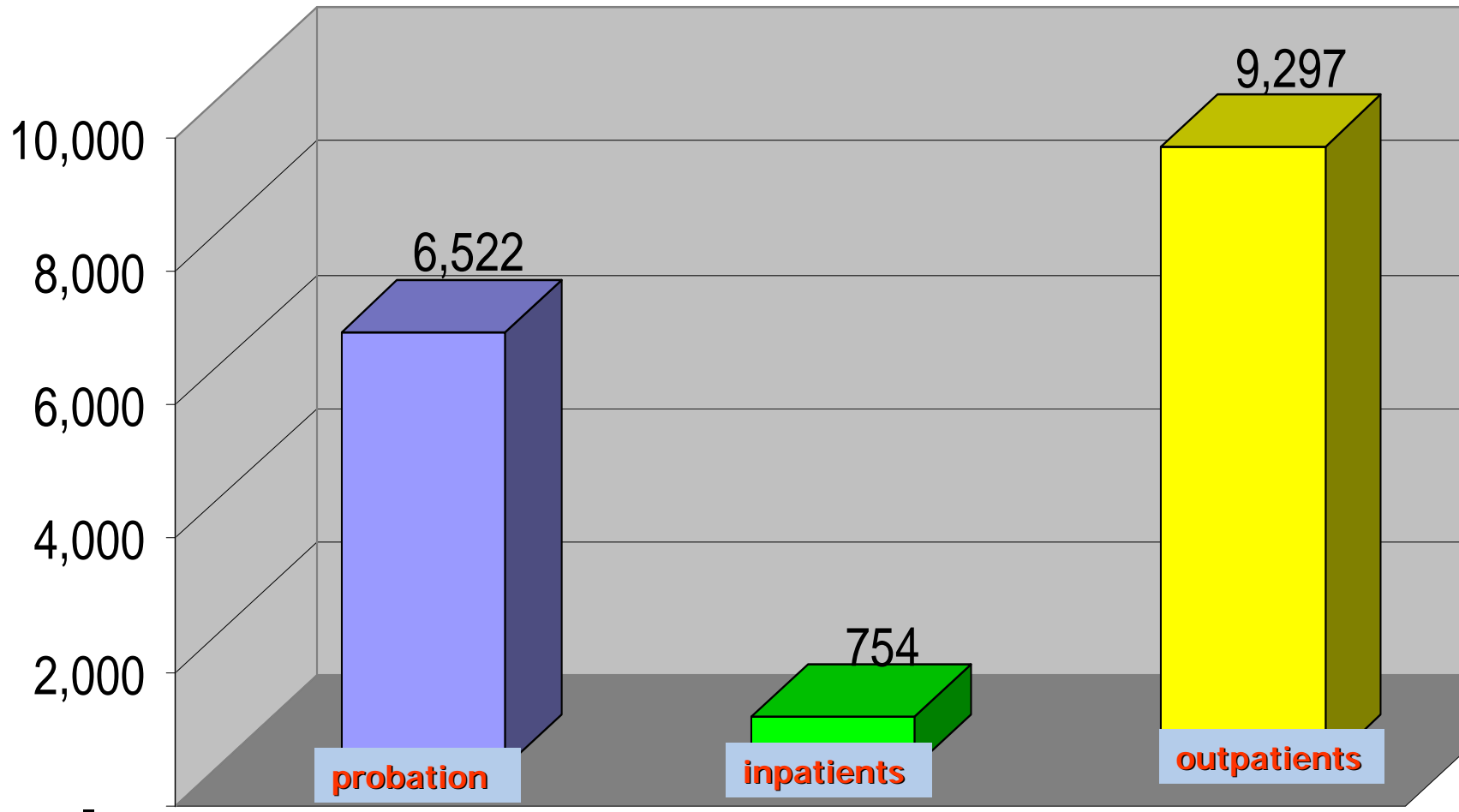


The number of the assesseds and identifieds by discretion of the Sub-Committee.

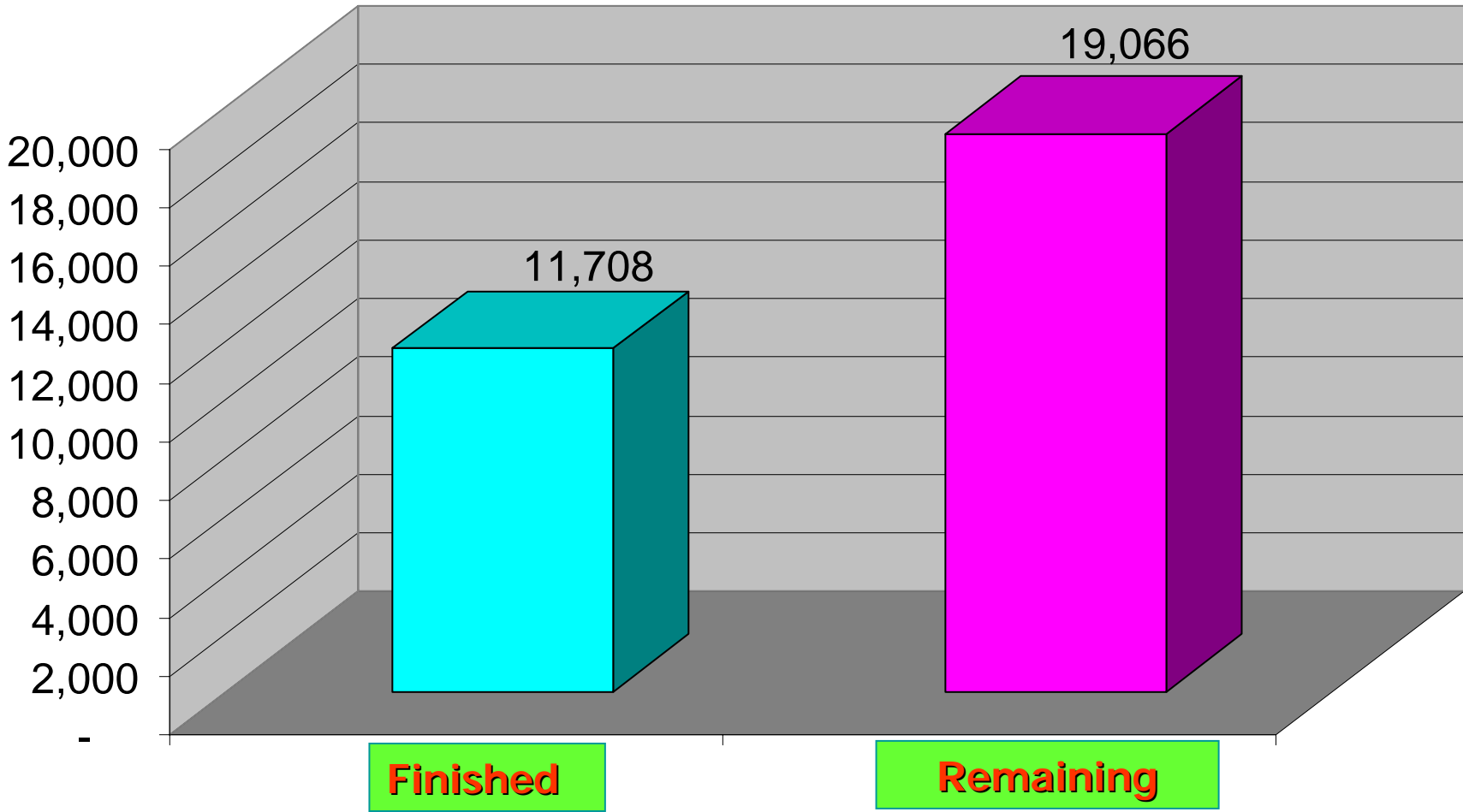
Mar 3,2003 - Dec 31,2004



**the number of the assesseds and identifieds
by types of treatment
Mar 3,2003 - Dec 31,2004**

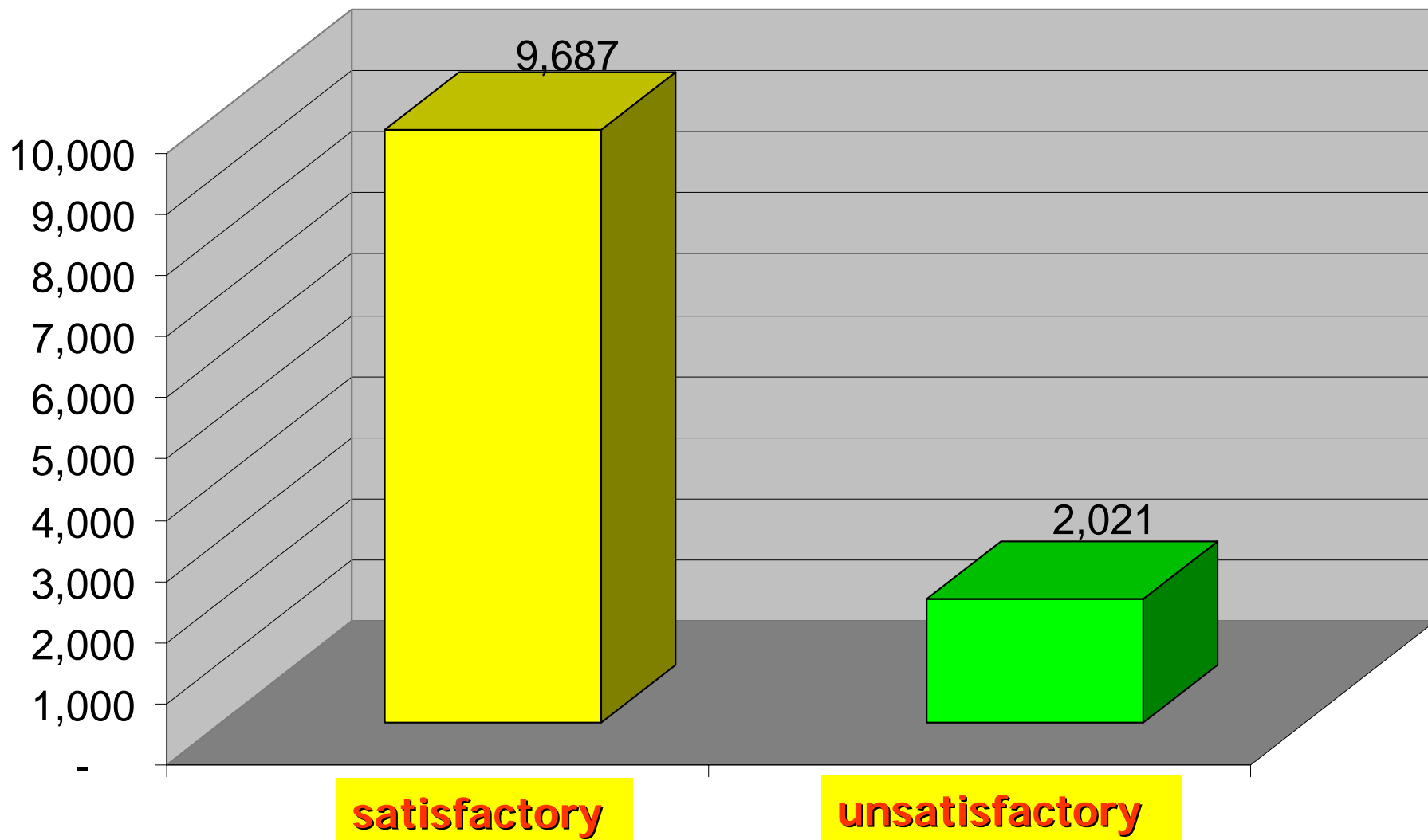


rehabilitative outcomes (Mar, 2003 - 2004)



the rehabilitative outcomes by satisfactory and unsatisfactory

March, 2003 - December, 2004





Thank you